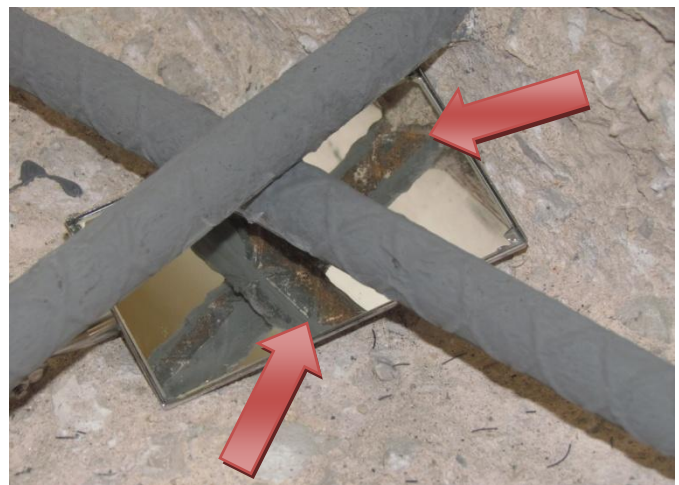




When coating rebar, we need to make sure that we review and clean the entire bar, even the hard to reach areas, such as the underside. *We/Subcontractor should have a mirror on site to verify installation.*



Existing steel which needed to be cleaned and coated was not properly cleaned (wire-wheeled) and coated on the underside...



Always plan ahead and discuss possible hard to reach areas of steel. Discuss how the steel must be prepared, how the steel will be cleaned and properly coated...Discuss what materials/tools will be needed in order to do the job correctly the first time.

Spend a few minutes prior to the start of the work with your team to coordinate proper tools and access requirements in order to avoid unnecessary re-work and delays in the schedule.